



Resilience



PROGRESS REPORT 2022



NATIONAL
HEALTH
FOUNDATION

National Health Foundation's mission is to improve the health of under-resourced communities by taking action on the social determinants of health.

We believe that all people, regardless of who they are or where they live can achieve their highest level of health.





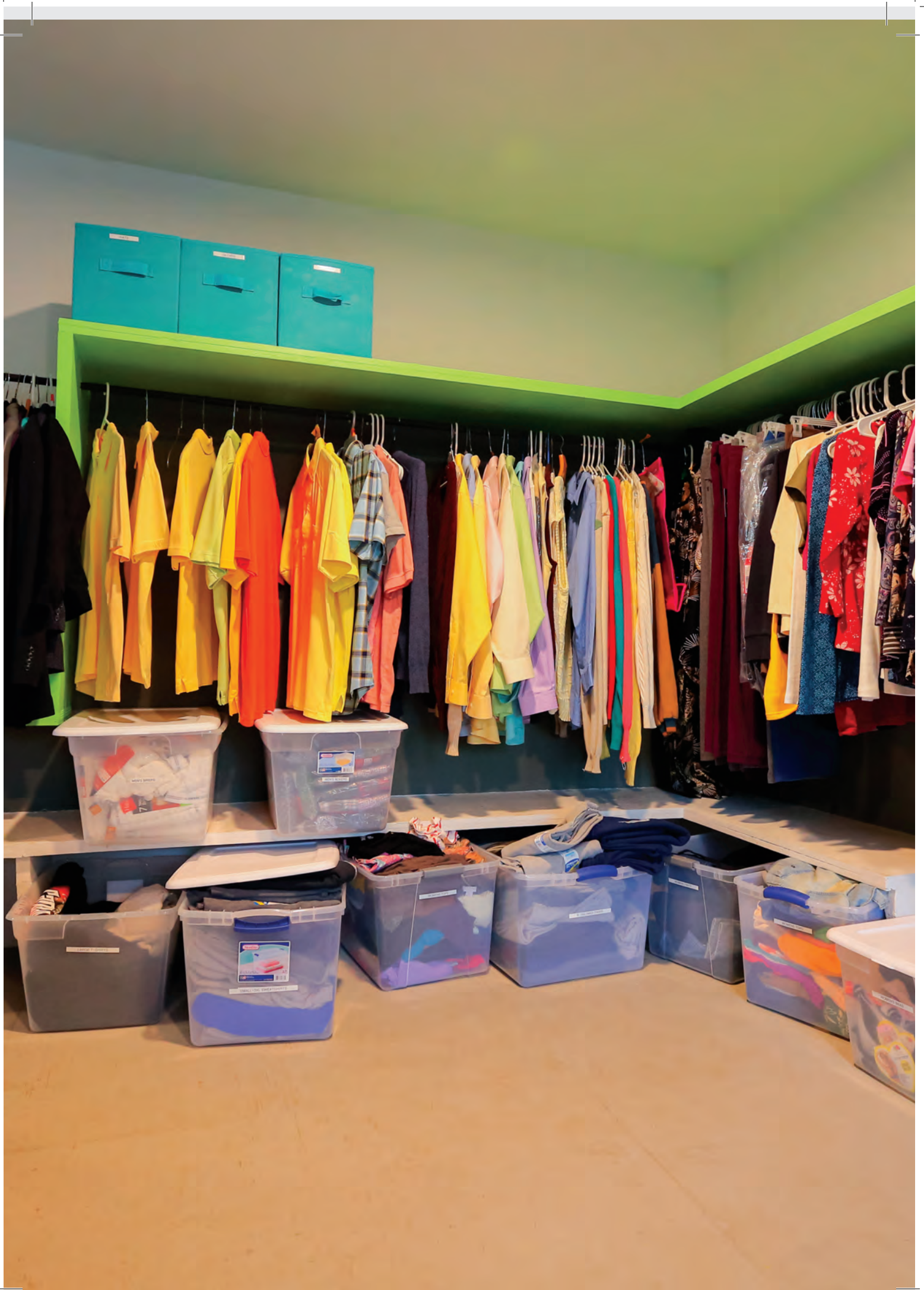




TABLE OF CONTENTS

7 Letter from the CEO/Board Chair

9 Values/Mission

10 JEDI (Justice, Equity, Diversity, and Inclusion)

12 Glendale Recuperative Care

13 Pico-Union Recuperative Care

14 Ventura Recuperative Care

15 Oxnard Recuperative Care

16 Expansion of Recuperative Care: Arleta

18 NHF Community Gallery

20 Food Access

22 Built Environment

24 Education

28 Donors and Supporters

29 Board of Directors/Leadership Team

“I could not be prouder of the culture of resilience that has shown itself present at every level of this organization. It is this quality that has enabled NHF to reach its 50th year of service and will continue enabling us to serve our communities for years to come.”

– Dr. Felita Jones
President & CEO

LETTER FROM THE CEO

Dear Friend of NHF:

NHF closes another outstanding year serving the unhoused and underserved. With National Health Foundation's (NHF) work in 2020 and 2021 constrained by the COVID-19 pandemic, 2022 was an opportunity to not only return to service at full capacity, but also look towards the future and commit to exciting developments for the years ahead.

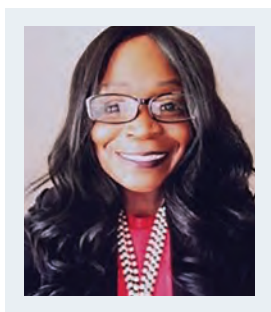
The past few years at NHF have been characterized by a commitment to growth in the face of change, adaptation in the face of adversity, and an enduring determination to continue delivering results for the communities we serve, no matter the challenge. We could not be prouder of the culture of resilience that has shown itself present at every level of this organization. It is this quality that has enabled NHF to reach its 50th year of service and will continue enabling us to serve our communities for years to come.

As NHF continues to grow and change, we can assure you of this: as the composition of our organization continues to adapt over time, the work, values, and mission of our organization will always remain the same, putting service above self. The deep ties we have established within the communities we serve continue to inspire and drive us toward achieving our mission: to improve the health of under-resourced communities and ensure all people, regardless of who they are or where they live, can achieve their highest level of health. We will continue to allow our work to be guided by our six foundational principles: health equity, partnership, empathy, community, people power, and inclusion.

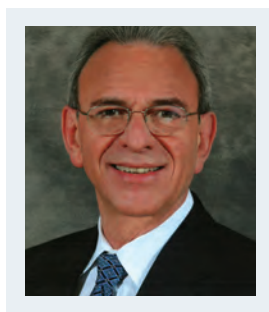
I hope this annual report illuminates how far we have come since our founding in 1973, uplifts the accomplishments we have made in 2022, and provides inspiration for what lies ahead as we embark into our 50th year of service.

Thank you for your continued support of the National Health Foundation. Together, we will continue removing barriers that prevent communities from achieving their highest level of health, through hard work and a resilience that helps to continuously move the needle forward in supporting the unhoused and under-served at the highest level possible.

With deepest appreciation,

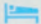


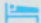
Dr. Felita Jones
President and CEO

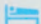


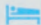
Dr. John Calderone
Board Chair

Welcome
ENJOY YOUR STAY

 Bed A: _____

 Bed B: _____

 Bed C: _____

 Bed D: _____



VALUES / MISSION

MISSION

NHF aims to improve the health of under-resourced communities by taking targeted, community-informed actions to impact social determinants of health.

VISION

NHF believes all people, regardless of who they are or where they live, can achieve their highest level of health.

VALUES

Every aspect of our work is deeply rooted in six core values that make up the foundation of our organization. In all we do, from executive level decision-making to on-the-ground community engagement, these six principles act as powerful touchstones that continually guide us on our journey to achieving our mission.

HEALTH EQUITY

We believe that everyone, no matter who they are or where they live, should have a fair and just opportunity to be as healthy as possible.

EMPATHY

We believe the capacity to place ourselves in another person's shoes and approach our work from a place of care, compassion, and understanding is tantamount in order to best support those we serve.

OUR PEOPLE

Our employees are the heart of our organization. Together, we move our mission and vision forward.

PARTNERSHIP

In order to be successful and achieve our long-term goals, we must create meaningful connections and engage in productive collaboration with organizations, community leaders, and elected officials who share our visions, values, and aspirations.

COMMUNITY

We recognize the communities we serve are the experts in understanding what they need to be healthy and thrive. We hope, in our efforts, to follow the guidance of community leaders to affect lasting, culturally-informed, sustainable change.

JUSTICE, EQUITY DIVERSITY & INCLUSION

We believe understanding the historic and current manifestations of racism and oppression will enable us to most effectively take action on the social determinants of health.

JEDI STATEMENT

National Health Foundation believes justice, equity, diversity and inclusion are essential to accomplishing our mission and maximizing our impact. Understanding the historical and current manifestations of racism and oppression will enable us to most effectively take action on the social determinants of health. As one of our core values, **JEDI** will shape our strategies, programs, operational activities, and advocacy efforts. We recognize the work of **JEDI** is difficult, but our commitment is unwavering.

FIVE MAIN FOCUSES FOR 2023



Training and discussion sessions for org leaders



Strengthen onboarding experience for new hires



Develop an equity assessment tool



Continue standing JEDI initiatives and commitments



Research nonprofit DEI space and practices



HOUSING / RECUPERATIVE CARE SITES



Glendale Recuperative Care

In January 2022, NHF opened the doors to a new recuperative care facility in Glendale, CA. In partnership with the Los Angeles County Department of Health Services' Housing for Health program, NHF's Glendale facility offers 36 recuperative care beds to individuals experiencing homelessness. Guests at the Glendale facility receive healthy meals, housing navigation services, medication education, and connection to community resource providers.

Number of Beds: 36

Typical Guest Stay: 30-120 days

2022 Program Outcomes:
55 guests served



HOUSING / RECUPERATIVE CARE SITES



Pico-Union Recuperative Care

Our flagship Pico-Union recuperative care facility opened in November 2018 and continues to diligently serve individuals in one of LA's most dense neighborhoods. It serves as a model for our recuperative care sites and has cemented itself as a fixture of the Pico-Union community. The facility holds 60 beds and offers medical respite to individuals experiencing homelessness who have recently been hospitalized for an acute illness or injury. NHF partners with local hospitals and Managed Care Plans to provide medical oversight and social services to our unhoused neighbors. In addition to health care, guests at our Pico-Union facility receive healthy meals, housing navigation services, medication education, and connection to community resource providers during their recovery.

Number of Beds: **60**

Typical Guest Stay: **15-90 days**

2022 Program Outcomes:

792 guests served



HOUSING / RECUPERATIVE CARE SITES



Ventura Recuperative Care

NHF's Ventura Recuperative Care facility opened in 2017 and is located within the Salvation Army in Downtown Ventura. At this site, NHF maintains a public-private collaboration with local hospitals to service 12 recuperative care beds for individuals experiencing homelessness who have recently been discharged from local Ventura County hospitals or Gold Coast Health Plan sites. The site provides medical oversight and social services to unhoused individuals in Ventura County to help them get back on their feet after acute injuries or illnesses.

Number of Beds: **12**

Typical Guest Stay: **15-90 days**

2022 Program Outcomes:
174 guests served

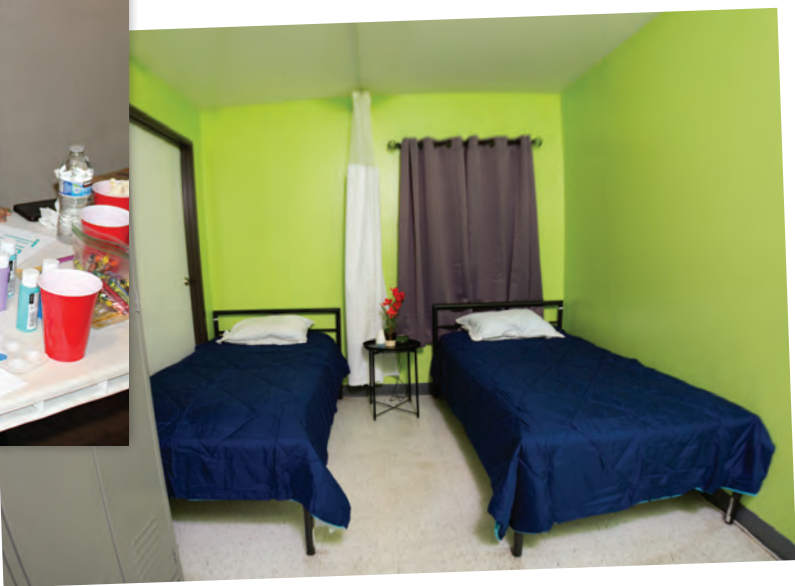
HOUSING / RECUPERATIVE CARE SITES

Oxnard Recuperative Care

NHF operates our Oxnard Recuperative Care facility in partnership with Mercy House and Ventura County Health Care Agency (VCHCA). Within this 70-bed facility, NHF operates 20 recuperative care beds that serve individuals experiencing homelessness who have recently been discharged from local Ventura County Hospitals and Gold Coast Health Plan sites. The Oxnard site was originally established as a Project Homekey facility at the start of the COVID-19 pandemic in coordination with the county and state, however, this site is set to transition to permanent supportive housing by the end of 2023. As this transition occurs, the Oxnard Recuperative Care program will relocate to a permanent site allowing us to expand to a 50-bed facility by May 2023.

Number of Beds: 20 (50 by Summer 2023)
Typical Guest Stay: 15-90 days

2022 Program Outcomes:
130 guests served



EXPANSION OF RECUPERATIVE CARE: ARLETA

NHF is incredibly excited to expand the scope of its recuperative care programming through the unveiling of a new facility in Arleta, CA. Demands for services to address homelessness remain high in Los Angeles, especially due to the effects of the COVID-19 pandemic. It is the hope that, through this new Arleta facility, NHF will be able to expand specifically in serving older adults, who happen to be the fastest growing population experiencing homelessness.

NHF’s Arleta recuperative care site is set to be a 43,000 square foot state-of-the-art facility, providing wellness-driven housing and wraparound services for 148 older adults (55+) experiencing homelessness across Los Angeles until they can be connected to permanent housing.

Seniors are the fastest-growing demographic within the homeless population in California, and many cite disabling health conditions as a contributing factor to their unsheltered living situation. The Arleta facility has been designed to best serve this population and will include a host of wraparound services and resources including on-site medical clinics for both primary care and behavioral health, and a congregate meal site for guests and the community at large experiencing food insecurities.

The Arleta facility is set to open October 2023.



EXPANSION OF RECUPERATIVE CARE: ARLETA



NHF COMMUNITY GALLERY



NHF COMMUNITY GALLERY



COMMUNITY INITIATIVE PROGRAMS

Impacting Health Equity through Food Access

CalFresh Connection

Through our CalFresh Connection program, NHF tackles food insecurity across under-resourced communities in Los Angeles by connecting families and households to available CalFresh Supplemental Nutrition Assistance Program (SNAP) benefits and strengthening access to affordable, healthy food.

Navigating public benefits programs like CalFresh can sometimes be a difficult and lengthy process. By increasing enrollment and retention in the CalFresh benefits program through careful case management, NHF has utilized the CalFresh Connection program to help combat obstacles and barriers that lie between families in our communities and the food access they need.

2022 ACCOMPLISHMENTS:	PARTNERS:
<ul style="list-style-type: none">•5600 individuals reached through outreach and education•1288 Program referrals•532 CalFresh Applications submitted•205 households being case managed	<ul style="list-style-type: none">•Southside Coalition of Community Health Centers•LA Care + Blue Shield Community Resource Centers•LAUSD select schools•California Association of Food Banks•Albertsons Company Foundation

CalFresh Healthy Living

NHF’s CalFresh Healthy Living program focuses on the powerful synthesis of healthy diet and exercise habits to improve overall health outcomes across the communities we serve through outreach and education efforts. Through this program, we connect with members of SNAP-eligible households across the region and provide nutrition education courses, cooking courses, regular healthy food distributions, and physical activity classes.

2022 ACCOMPLISHMENTS:	PARTNERS:
<ul style="list-style-type: none">•1500 adults and children reached through 150 nutrition and physical activity classes•685 participants in 34 cooking classes and demonstrations•730 participants through 11 food distributions	<ul style="list-style-type: none">•LACDPH•LAUSD•HOLA (Heart of Los Angeles)•LA Parks & Recreation

Food4All

In 2022, NHF entered a coalition with other community-based organizations, food access program providers, and local advocacy groups across California to advocate before CA state legislators for the expansion of CalFresh benefits eligibility to all Californians, regardless of immigration status. Through our coalition work, we developed a 10-member mini coalition of young advocates determined to fight for change and pushed to fully fund and pass SB 464: Food4All.

As of 2021, California has the largest immigrant population of any state in the country. Immigrant households, in general, face higher rates of food insecurity than non-immigrant households. NHF firmly believes that all individuals, regardless of who they are or where they live, should be supported to achieve their highest levels of health. By joining the Food4All coalition, NHF hopes to play a vital role in the advocacy necessary to ensure benefits are extended to this significant portion of our California communities.



COMMUNITY INITIATIVE PROGRAMS

Impacting Health Equity through Built Environment

Comunidad de NHF: Pico-Union Community Leadership Group

Anchored at our Pico-Union recuperative care facility, NHF facilitates and collaborates with a community-led group in the Pico-Union community. Members of this group coined themselves “Comunidad de NHF” and work to implement health and wellness services and programs into the neighborhood.

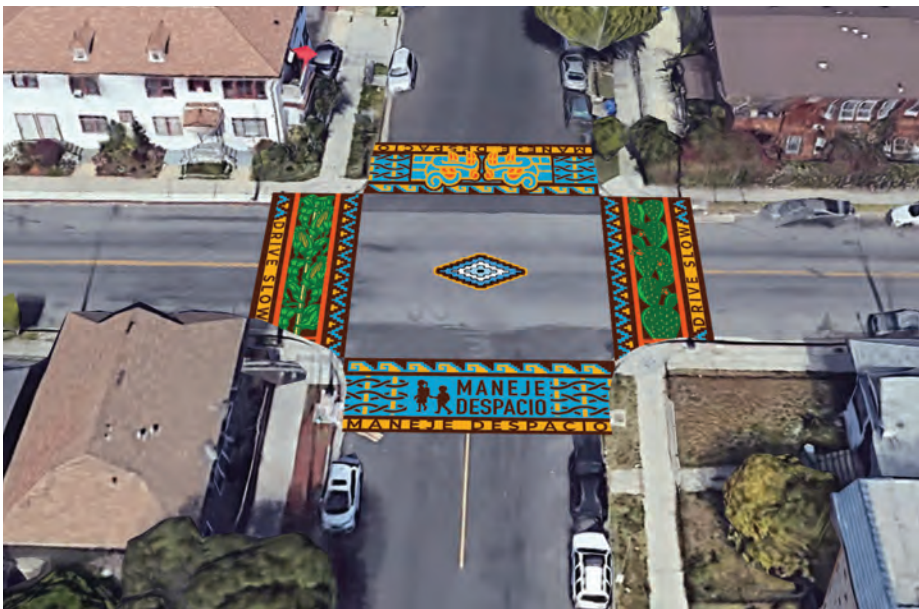
In collaboration with NHF, Comunidad de NHF leaders plan wellness workshops for community members, host an annual health fair and block party, and have undertaken a 5-year street improvement plan to improve walkability in the neighborhood. They were also successful in transforming an under-utilized plot of land at the Pico-Union facility into a thriving community garden. Most recently, Comunidad de NHF researched and designed a decorative crosswalk to improve pedestrian safety at a busy intersection near the facility.

2022 ACCOMPLISHMENTS:	PARTNERS:
<ul style="list-style-type: none">• Hosted 28 community activities/events including health workshops, vaccine clinics, and community leadership group meetings• Reached 1200 unique community residents• Hosted 5th Annual Community Fair & Block Party	<ul style="list-style-type: none">• Community Members• LA Council District 1• Toberman Recreation Center• LA Department of Public Works- Office of City Beautification• SCAG – Go Human program

Park Equity Alliance

NHF is a proud member of the Park Equity Alliance (PEA)—a coalition of community organizations and leaders across Los Angeles striving to ensure equitable access to parks and green spaces for all Angelenos. 1 in 4 Californians do not currently have a park within walking distance of their home, and PEA seeks to change this.

PEA has been a powerful voice for underserved communities since its founding and continues to advocate on behalf of underserved communities for the allocation of resources to renovate existing parks or construct new ones.



Rendering of decorative crosswalk to increase pedestrian safety in Pico-Union neighborhood.



COMMUNITY INITIATIVE PROGRAMS

Impacting Health Equity through Education

Be a STAR (Successful Teens Acting Responsibly)

Strong correlation has been found between an individual’s access to higher education and their ability to lead a longer, healthier life. In line with our efforts to improve the health outcomes of under-resourced communities, NHF aims to combat the barriers that disproportionately impede young adults in under-resourced schools and communities from pursuing higher education. One such barrier is teen pregnancy.

Through our school-based youth wellness program Be a STAR, NHF aims to combat teen pregnancy by empowering high-risk youth to make informed decisions regarding their personal, financial, social, emotional, and sexual health. Students are further equipped with strategies for setting academic goals and accessing community resources to prepare them for collegiate or vocational achievement post-graduation.

2022 ACCOMPLISHMENTS:

- 76 students served in 2022 (1410 to date since 2007)
- 4 partner institutions, including high schools and the YMCA
- 52 educational sessions provided

CURRENT PARTNERS AND FUNDERS:

- LAUSD
- YMCA
- Edelstein Foundation
- ETR Associates









DONORS AND SUPPORTERS

Ahmanson Foundation	LA County Department of Health Services (DHS)
Albertsons Foundation	
Annenberg Foundation	LA County Department of Public Health (DPH)
Archstone Foundation	Local Initiatives Support Corps (LISC)
Blue Shield Promise	Nourish CA
California Association of Food Banks	Providence
California Community Foundation	Providence Holy Cross
California Healthcare Foundation	Providence Saint Joseph's Medical Center
Carrie Estelle Doheny Foundation	
Cedars-Sinai Medical Care Foundation	Quest Diagnostics
Communities Lifting Communities	Social Justice Partners
Conrad N. Hilton Foundation	Southern California Association of Governments (SCAG)
Edelstein Foundation	Southside Coalition of Community Health Centers
Education, Training & Research Associates (ETR)	The Change Reaction / Perlman
Health Resources & Services Administration (HRSA)	The Ralph M. Parsons Foundation
Hospital Association of Southern California (HASC)	Unihealth Foundation
Kaiser Permanente	United Way Emergency Food Program
Knistrom Foundation	United Way Emergency Food Program Phase 39 / ARPAP

BOARD OF DIRECTORS

EXECUTIVE TEAM

John Calderone, Ph.D
Board Chair

George Greene, Esq.
*Ex Officio Vice Chair
President/CEO of Hospital Association of
Southern California (HASC)*

MEMBERS AT LARGE

Gerald “Jerry” Sullivan, MBA

Mara Bryant, MBA

Alison Birnie, RN

Paul Young, MBA

LEADERSHIP TEAM

Dr. Felita Jones
President and CEO

Kristina Tran
Chief Financial Officer

Chad Monk
Senior Vice President, Programs & Public Policy

Christian Ocampo
Vice President, Information Technology

Marlene Smith
Regional Vice President of Operations - West

Charles Hogue
Regional Vice President of Operations - East

Qiana Parham
Director of Recuperative Care, Pico Union

Aisha Astacio
Director of Recuperative Care, Ventura County

Lionell Garcia
Director of People & Culture

Scott Twomey
Special Projects - Arleta Recuperative Care

Megan Pepper
Nurse Practitioner Administrator

Ana Mancía
Director of Recuperative Care, Glendale

Stephanie Butler
Director of Nutrition & Food Security Programs





Rejoice



515 South Figueroa St., Suite 1300
Los Angeles, California 90071
213.538.0700

www.nationalhealthfoundation.org